



Full Capability Welding
(MIG, TIG and Spot)

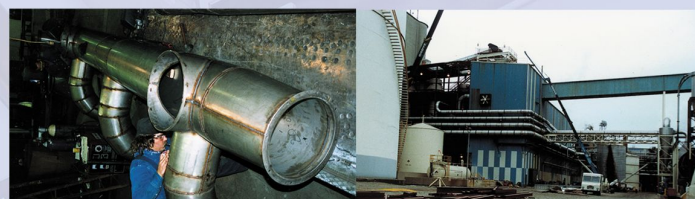


12' Shear, 1/4" Capacity.

Founded in 1922, Budde has developed into the area's #1 close tolerance and industrial specialist. Technological advances of the last several years have been embraced and invested by Budde in order to provide our customers with even more diversified capabilities, improved quality, at a cheaper and faster delivery cycle.



Additional Capabilities



Industrial Ductwork.



Air Pollution Ductwork for the Agriculture Industry.



Odor Scrubber.



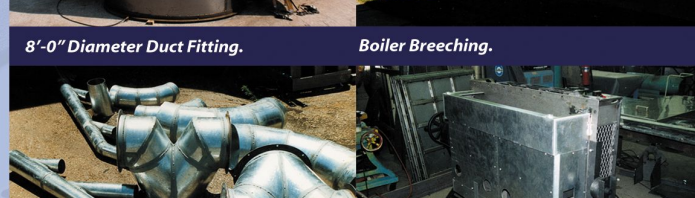
Dust Collector System.



8'-0" Diameter Duct Fitting.



Boiler Breeching.



Collector Ductwork.



Locomotive HVAC Unit for the Railroad Industry.



Industrial WYE Branch.



Industrial Oil Mist Collector.

Call For Free Quote: 937/224/0868



BUDDE's 25,000 sq. ft. plant contains a comprehensive array of contemporary equipment, including (to name a few): 12' shear w/.25" capacity; 150 ton brake with numerical gaging; MIG, TIG and spot welders; 5' power rolls etc.

While most of our projects are steel, stainless and aluminum, we also work with copper, brass, inconel, monel and titanium.

Our specialties include machine guards, control boxes, tanks, pans, chutes, chassis, frames, ventilation/exhaust systems, particle/fume management systems and all manner of ductwork. From R&D Prototype to Custom Fabrication to Production Runs.



Industrial Fabrication & Install

Budde has the Skills and Equipment to Meet Your Needs in the Ever Changing World of Sheet Metal!

For specific support, please contact:

Tom Budde: President/Estimator
tom@buddsheetmetal.com

Steve Budde: Vice President/Estimator
steve@buddsheetmetal.com

Bill Budde: Operations Manager/Estimator
bill@buddsheetmetal.com

Tony Gudorf: Estimator/Project Manager
tony@buddsheetmetal.com

Dan Eckhart: Estimator/Project Manager
dan@buddsheetmetal.com

Dave Swick: Estimator/Project Manager
dave@buddsheetmetal.com

Willie Hampton: Shop Foreman
willie@buddsheetmetal.com

Ryan Gudorf: CAD/CAM Supervisor, Network Administrator and Webmaster
ryan@buddsheetmetal.com

Angie O'Bryan: Office Manager
angie@buddsheetmetal.com

Candice Budde: Accounts Payable/Receivable
candice@buddsheetmetal.com



305 Leo Street
Dayton, OH 45404
Phone: 937/224/0868
Toll Free: 800/875/0868
Fax: 937/224/1356
Website: buddsheetmetal.com

Call For Free Quote: 937/224/0868



YOUR FULL SERVICE SHEET METAL FABRICATION SOLUTION!

BUDDE SHEET METAL WORKS, INC. is committed to having a state-of-the-art sheet metal fabrication facility. We have the latest in 3D CAD/CAM unfolding software, CNC laser and punching. We are a complete fabrication shop from flat blanked parts to custom formed and welded assemblies.

A tradition of the region's pioneers in quality sheet metal work, the **BUDDE SHEET METAL WORKS** has served commerce and industry since 1922.

The **BUDDE System** means: **ON-SPEC, ON-QUALITY, ON-TIME and ON-COST**...It's a System that Works!

The **BUDDE System** offers clients major advantages such as:

Versatility: Large or small, **BUDDE "Can Do"**, regardless of industry or application.

Flexibility: **BUDDE** works aggressively to meet tough scheduling and specification needs.

Precision: However tight the specs, **BUDDE** gets it done right, the first time.

Top Value: When it comes to cost/quality ratios nobody comes close to **BUDDE**.

Engineering: From proto types to production runs, **BUDDE's** design team backs the job.

ART

Cutting Edge CAD/CAM Technology

The "Art" of 3D CAD Solid Modeling

In the last ten years Budde's has acquired the software, hardware and the skills needed to operate the latest generation of 3D CAD/CAM and CNC technology. Thus making Budde's the most technologically advanced sheet metal fabrication shop in the region.

Utilizing 3D Solid Modeling software in the design process of our customer's parts and assemblies we can now "virtually" create all your parts three dimensionally in our CAD workstations. This allows us to detect and correct any errors that may have been resident in the older 2D design process thus eliminating design and fit-up problems in the computer and not on the shop floor.

These technologies along with CAM software (that Budde's actually helped develop and test) enables us to quickly move our 3D data from the CAD system to the CAM system without the loss of the intelligent 3D data attributes. This further eliminates common errors that may arise during the translation process from CAD to CAM.

Budde also utilizes the latest in Microsoft's SharePoint Technology to lock our CAD/CAM data in a virtual "vault" on our servers to protect customer data as well as our own. This system also allows our estimators outside the CAD/CAM department to quickly and easily search for and access legacy data in order to quickly turn around quotes and jobs that a customer may want repeated in the future.

Budde's can accept these various file formats (as well as others) from our customer's via E-mail or our FTP server. Contact Ryan Gudorf (ryan@buddsheetmetal.com) if you have and questions.

- Solid Edge-Primary CAD system (*.asm, *.psm, *.prt, *.dft)
- AutoCAD (*.dwg, *.dxf)
- Solid Works (*.sldprt, *.sldasm)
- Unigraphics (*.prt)
- Parasolid (*.x_b, *.x_t)
- ProE (*.asm, *.prt)
- STEP (*.step, *.stp)
- ACIS (*.sat)
- IGES (*.iges, *.igs)
- Catia V4 (*.model)
- Microstation (*.dgn)



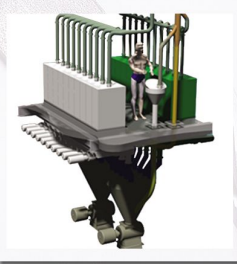
Parts and Assemblies are Designed to Customer Specifications Using Their Prints, Cad File, Etc. and are Modeled in 3D from Scratch Using Our Modern Cad/Cam Tools. This Ensures Our Parts are Correct and Fit Together the First Time.



Custom Enclosures for the Rubber Industry.



Design/Build Trolley System for Automotive Component Industry.



Design/Build Particle/Fume Management System for the Dog Food Industry.



Custom Fixturing for the Automotive Parts Industry.

THE BUDDE SYSTEM:
• ON-SPEC
• ON-QUALITY
• ON-TIME
• ON-COST

TO

Cutting Edge Laser Cutting & Punching Technology



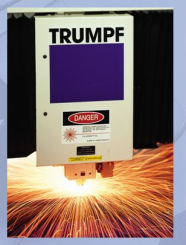
TRUMPF - Trumatic L3030 3000 Watt LASER Cutting Machine
Featuring:

- 60" x 120" flat sheet pallet changer (virtually no downtime during production).
- High speed cutting with Sprintlas®.
- Part number etching capability.
- High accuracy ± .004" / ± 0.1mm.
- RotoLas®-Rotary tubing chuck (Capability of processing round, square and rectangular tubing).
- Capable of precise cutting.
 - *.800" Mild Steel
 - *.480" Stainless Steel
 - *.375" Aluminum.

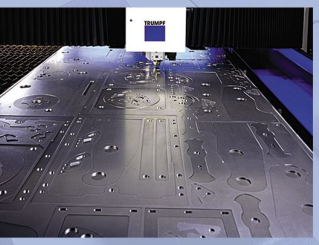


TRUMPF - Trumatic TC2000R Flexible PUNCHING Machine.
Featuring:

- 9 tool stations of full auto indexing (360 degree rotation of all tools).
- Up to 900 hits per minute.
- 2,200 during part marking.
- High accuracy ± .004" / ± 0.1mm.
- Scratch and burr free (brush table support).
- Flexible for Punching, Nibbling, and Forming.
- 20 tons of punching force.
- .250" capacity.



3000 Watt Laser Capable of Cutting 7/8" Steel, 5/8" Stainless and 3/8" Aluminum.



Nested Layouts to Maximize Material Utilization.



9 Station w/300° Rotation Punch Press with the Ability to Hold 90 Tools Including Forming and Tapping Tooling.



Round, Square and Rectangular Tube Laser Cutting.

BUDDE

SHEET METAL WORKS

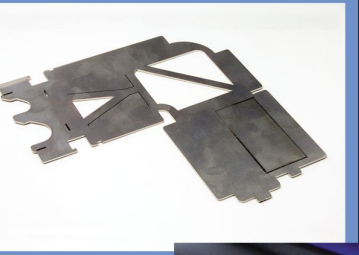
305 Leo Street
Dayton, Ohio 45404
Phone: 937/224/0868
Toll Free: 800/875/0868
Fax: 937/224/1356
Website: buddsheetmetal.com

Call For Free Quote: 937/224/0868

BUSINESS CARD

PART

Cutting Edge Forming Press Brake Technology



Flat part from our Laser Cutter or Punch Press.



First Bend.



Second Bend (Separate Station).



Third Bend.



Final Bends.



Finished Assembly.

Laser Cutting
CNC Punching
Shearing
Conventional and CNC Press Brake
Forming
Welding
Assembly

YOUR FULL SERVICE SHEET METAL FABRICATION SOLUTION!



Call For Free Quote: 937/224/0868

Model	Available Tonnage	Bed Length
TrumpfV85	95 Ton	81 Inches
TrumpfV170	190 Ton	161 Inches
Cincinnati	90 Ton	96 Inches
Cincinnati	150 Ton Mech	120 Inches
Accurpress	60 Ton	72 Inches



Recently Acquired V85 Press Brake.